



NELSON & COLNE  
COLLEGE GROUP

UNIVERSITY CENTRE

Be  
**extraordinary.**

EARLY YEARS AND EDUCATION

SECTOR GUIDE



# Welcome to Early Years and Education

**Are you ready to develop  
your expertise in Early Years  
and Education?**

Be a part of a critical industry that shapes the minds of the next generation of citizens; from toddlers to adults, whichever pathway you choose to pursue, you will gain the ability to make a difference in society.

Get started with your career in Early Years and Education or upskill, retrain with an organisation that has an outstanding reputation for teaching and learning. Learn from our expert lecturers and senior leaders and be a part of a group of colleges that supports aspirations, and exists to create the extraordinary.

There were  
506,400 full-time  
teachers in the  
UK in 2019

There are  
over 10 million  
students in the  
United Kingdom



# Why Us?

---

**When you join our University Centre, you will not only join a group of highly experienced and qualified lecturers but a group of colleges who have a long track record of academic success. You will benefit from our combined history of outstanding quality, increasing portfolio of Higher Level qualifications - which continues to grow, university partnerships and industry links.**

Our University Centre is a place where you can learn in-depth sector knowledge, paired with qualifications that are designed with the industry in mind. You will be able to take advantage of our educational setting with placements readily available to you and resources to help you thrive in your studies; getting you well-equipped and ready to start your career or upskill.

You will also have the added benefits of our facilities across our campuses that include well-resourced Learning Resource Centres, modernised classrooms and study spaces. Specific areas, specifically designed with higher education students in mind, are undergoing significant investment to give you space to enjoy, relax, and study.



**Our students will join The British Association for Counselling and Psychotherapy (BACP) as part of their studies. BACP is one of the largest therapy professional bodies in the UK with over 47,000 members, which incorporates both counsellors and psychotherapists.**



# Fast-track your career

A career in Childcare and Education is not only rewarding but extremely satisfying. Depending on the area you wish to specialise in, you can either progress up the career ladder and become a senior leader in education or start a childcare business. Whatever path you decide to take, the sector needs nurturing individuals, just like you, who can get the best out of our young people. Our programmes will prepare you, future proof your career, and give you the skills and knowledge needed to thrive as a professional.



**Get experience, help transform teaching and learning, become an **Education Consultant**.**

You will:

- Earn between £25k - £75k depending on experience
- Provide support, solve problems and offer solutions; respond to the needs of the establishment
- Share best practice
- Create new teaching and assessment strategies



**Create a thriving environment, promote learning, become a **Nursery Manager**.**

You will:

- Earn from £25k up to £40k
- Offer a safe and stimulating environment that encourages developments
- Make sure the nursery meets Ofsted and early years foundation stage standards
- Manage and support staff



**Shape the next generation, share your knowledge, become a **Teacher**.**

You will:

- Earn from £25k - £41k as a starting guide; with top leaders receiving up to £117,197
- Prepare and deliver lessons
- Research new topic areas and be up to date on your subject knowledge
- Mark work, give feedback, and get the best out of your young people

**Job stability, constant demand within the sector**



**Earn £28,000-£60,000+ depending on your experience**



**International job opportunities**



# Industry Partnerships

---

**Our academics work with industry leaders from across Lancashire who help us shape our programmes.**

Employer partners help us design our qualifications for the industry by addressing any current skills gaps and factoring in future market trends. Students will not only gain an advantage from having tailored qualifications designed for the market, but they can also take advantage of their expertise with guest lecturing and visits to industry workplaces.

**The employers we work with include:**

Oakhill School and Nursery

Altham Primary School

Peel Park Primary School

St Mary Magdalene's

Puddleducks

All Saints Primary  
School Clayton

Lancashire County Council

North Lancs Training Group





# Our Experts



**Natalie Gibson**  
Programme Leader for Early Years and Childhood Studies

"I've been a Higher Education lecturer since 2014 and joined the University Centre in 2018 as Programme Leader.

"I have just completed my Masters in Early Years and Education Leadership and Management. Prior to that, I worked in the early years sector for 10 years gaining a range of experience and undertaking various roles from Practitioner to Manager."

"People should study with us because learning is personalised and our success rates are high. We can provide individually tailored support to all students offering the knowledge and skills that are required for working in the early years sector.

"I am passionate about my subject area because I know how important it is to see children thrive in their educational journey. I want to share my knowledge as well as learn from my students about how to provide children with a learning experience that will benefit them throughout their lives."

**"I am passionate about my subject area because I know how important it is to see children thrive in their educational journey"**

# Our Graduates

"I enjoyed the PGCE and the course is very well taught. This is a fantastic University Centre to study at.

"If childcare was ever an issue for me, my lecturer was understanding of the situation. If I needed to catch up, I could follow the learning online via Moodle, and if I needed advice on what I missed I knew that I would always receive peer and lecturer support. The class developed a good bond and helped each other through the challenges we faced.

"My qualification has helped me secure my first teaching job in Further Education at LifeSkills in Leeds which I am delighted about. I'm going to continue in teaching going forward and see where my career takes me."



**Rachel MacAllister**

Studied:  
**Professional Graduate Certificate in Education**  
  
Where now:  
**Gained employment as a teacher at Progression Leeds – Life Skills**



# Qualifications designed for industry

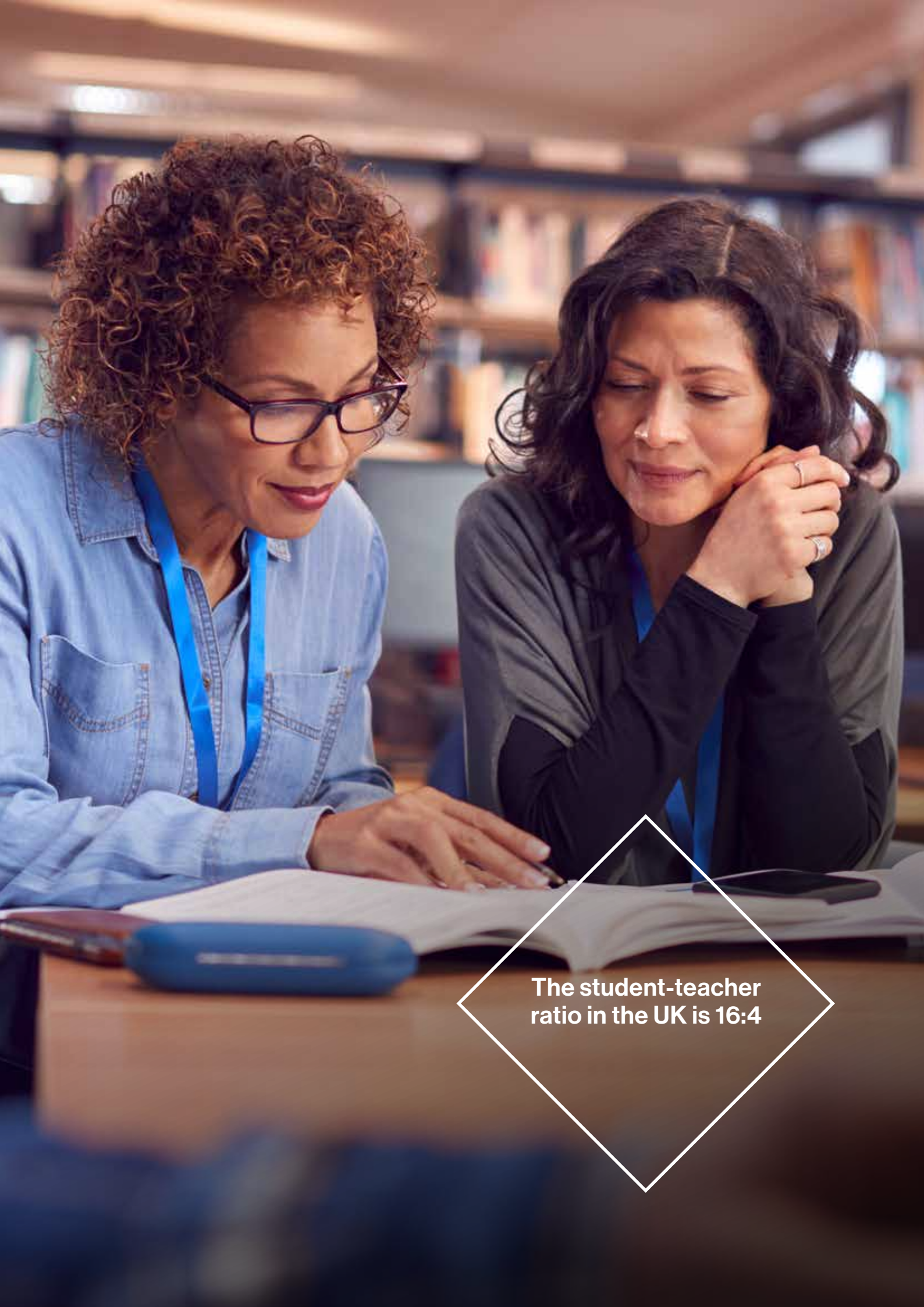
If you currently work in a Childcare and Education setting our qualifications can prepare you for your next step in your career. Or maybe you're looking to start your career after studying or retraining? We deliver qualifications that are designed with and for the industry.

Our expert lecturers closely monitor the sector to continually develop the curriculum; offering you tailored lessons that are designed to meet national needs; giving you an advantage in your career.

Our qualifications are also designed to suit you. We offer flexible delivery and tailored study packages, so you can study while you work, fit learning around your family life or take things at your own pace. Explore our programmes, pick your niche and fast track your career – it's time to invest in you.

There are 40%  
more female than  
male teachers





The student-teacher ratio in the UK is 16:4

LEVEL 7	<b>Postgraduate (MEng, MA, MSc)</b> This a Level 7 qualification for those wishing to expand their knowledge beyond Bachelor's level, with the opportunity to study specialist modules.		<b>Degree and Higher Level Apprenticeship</b> This type of study includes working while studying part-time; qualifications can range from Level 4 HNCs with progression onto Higher Level qualifications up to Level 7.
LEVEL 6	<b>Bachelor Degree (BA, BEng, BSc)</b> This is a full degree programme leading to a qualification such as a Bachelor of Arts (BA), Bachelor of Science (BSc) or Bachelor of Engineering (BEng); commonly known as undergraduate degrees.	<b>Bachelor (BA, BEng, BSc) Top-up Degree</b> This is a one year programme, that gives those students with a Level 5 qualification to top-up and gain an Honours Degree	
LEVEL 5		<b>Foundation Degree (Fd, Fda, FdSc)</b> This qualification is a Level 5 award, usually over two years (full-time). Students can then progress on to a top-up to graduate with an Honours Degree.	
LEVEL 4		<b>Higher National Diploma (HND)</b> A Level 5 qualification, that allows you to progress onto a top-up degree qualification and is usually studied over two years.	
		<b>Higher National Certificate (HNC)</b> A Level 4 qualification, that allows you to top-up with an HND qualification and is usually studied over one year.	
LEVEL 3	<b>Foundation Year</b> This programme adds one year to a Foundation/Bachelors degree. This gives students who do not have the entry requirements or prior industry experience to enrol on a Higher Level programme the opportunity to still work towards a Degree Level qualification.	<b>Access to Higher Education</b> This is a one year programme that acts as a stepping stone to Degree Level study. This gives students who do not have the entry requirements or prior industry experience chance to enrol on a Higher Level programme.	

# Qualifications Explained



# Our Courses

---

There are  
142 universities and  
381 FE colleges  
in the UK



FdA

# Teaching and Learning Support

A Foundation Degree in Teaching and Learning Support will start you on your path to working in this challenging and rewarding field. The foundation degree aims to provide you with a knowledge base that will enable you to reflect on the skills you need to be an effective practitioner in an educational setting. This degree will provide you with experiences that could further your career in services to support children, young people and adults in education.

What will I study?

In your first year, you will study:

- Professional studies and work based contexts and safeguarding
- Learning and development
- Using information and communication technology to support learning
- Inclusive educational environments
- Supporting English in your setting
- Supporting Maths in your setting

In your second year, you will study:

- Professional studies and work-based contexts with leadership and management
- Working with families and other professional practitioners
- Introduction to current issues in education
- Creative teaching and learning and curriculum frameworks
- Practice based research project

How will the course be assessed?

A series of written and practical work is assessed by your lecturers and will determine your overall grade.

Progression

Successful students from this programme can progress to a 'top-up' year of study in a BA (Hons) Childhood Studies or BA (Hons) in Teaching and Learning. The top-up programme is offered by the University of Cumbria.

Entry requirements

This is assessed on an individual basis. See page 34 for more details.



FdA

# Early Years

Do you currently work with young children? Or maybe you are looking to work in this sector? Our FdA Early Years will give you the skills and knowledge needed to support young children's care and development. You will develop a high level of practice in the planning, implementation and evaluation of activities to support children's learning and development within the Early Years. You will explore and critically debate key policy initiatives which impact directly on practice, while refining and developing your observation and research skills. You will develop as critically reflective practitioners and become confident in managing your own personal and professional development.



What will I study?

In your first year, you will study:

- Professional studies, work-based contexts and safeguarding
- Child development and learning through play
- Using information and communication technology to support learning
- Inclusive educational environments
- The early years foundation - stage 1
- Health and wellbeing in early childhood

In your second year, you will study:

- Professional studies and work-based contexts, with leading and supervising in early years provision
- Understanding behaviour in teaching and learning
- Working with families and other professional practitioners
- Introduction to current issues in education
- The early years foundation - stage 2
- Practice based research project

How will the course be assessed?

A series of written and practical work is assessed by your lecturer and will determine your overall grade.

Progression

On completion of this course you will be able to study BA (Hons) Early years (top-up).

Entry requirements

This is assessed on an individual basis. See page 34 for more details.



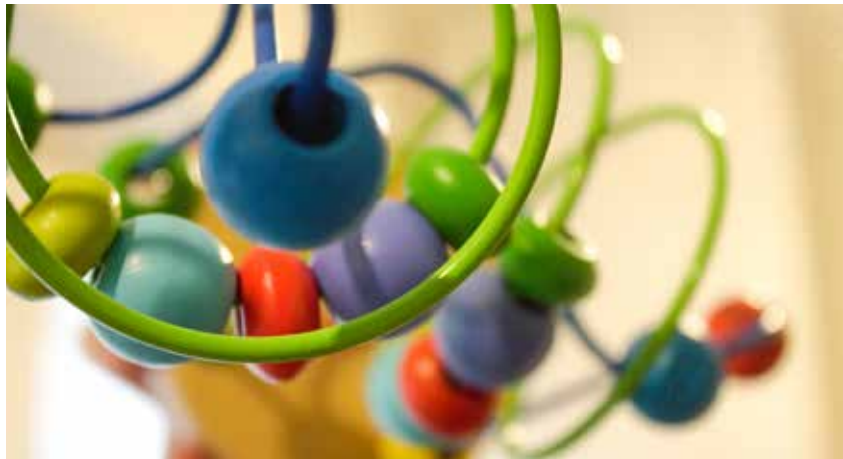


UCAS Code **X321**  
Location **Accrington Campus**  
Length **2 years part-time**

**BA (Hons) top-up**

# Early Years (Childhood Studies)

This course is designed to build upon the knowledge you gained from the Foundation Degree in Early Years, Foundation Degree in Teaching and Learning Support or similar Foundation Degree achieved elsewhere. You will further develop your vocationally relevant knowledge and understanding, as well as your academic knowledge to achieve a balanced view of childhood. You will debate policy initiatives that impact the health and wellbeing of children and families, as well as on their education. As a high-level practitioner, you will critically appraise the theories of leadership and management and consider your job role within this context.



- What will I study?**  
You will study:
- Theories and approaches to learning in Early Years
  - Developing children's health and wellbeing
  - Leadership and management in the early years
  - Research methods
  - Dissertation

**How will the course be assessed?**  
A series of written work underpinned by practical work is assessed by your lecturer and will determine your overall grade.

**Progression**  
On completion of this course you will be a fully qualified Early Years practitioner.

**Entry requirements**  
This is assessed on an individual basis. See page 34 for more details.



Location **Accrington Campus**  
Length **2 years part-time**

# PGCE/Certificate in Education Lifelong Learning (In-service)

- Certificate in Education Lifelong Learning (In-Service)**
- Professional Graduate Certificate in Education Lifelong Learning (In-Service)**
- Postgraduate Certificate in Education Lifelong Learning (In-Service)**

Are you currently employed as a teacher or trainer in education? This course is designed for those who work with post-14-year-olds. You will gain the skills and knowledge to use your expertise to become a subject specialist teacher. You will study learning, assessment, and achievement and how you contribute to this as a lifelong learning professional. The programme is focused on practical teaching. You will have the opportunity to gain experience of learning and teaching alongside other professionals with support from lecturers and work-based mentors. You will be supported to develop the necessary skills to become an outstanding teacher.

- What will I study?**  
You will study:
- Research informed teaching, learning and assessment
  - Becoming a subject specialist teacher
  - Being a subject specialist teacher
  - Policy and professional issues

**How will the course be assessed?**  
A series of written and practical work is assessed by your lecturers.

**Progression**  
On successful completion of the course, you will be eligible to gain Qualified Teacher Learning and Skills (QTLS) status, following a process of professional formation through the Society for Education and Training. In addition, those with a Certificate in Education can progress to BA (Hons) in Education and Professional Development. Those with a PGCE can progress to a MA in Education.

**Entry requirements**  
This is assessed on an individual basis. See page 34 for more details.





# PGCE/Certificate in Education Lifelong Learning (Pre-service)

Certificate in Education Lifelong Learning (Pre-Service)  
Professional Graduate Certificate in Education Lifelong Learning (Pre-Service)  
Postgraduate Certificate in Education Lifelong Learning (Pre- Service)

This course is designed for those who wish to work as a teacher or trainer with post-14-year-olds. You will gain the skills and knowledge to use your expertise to become a subject specialist teacher. You will learn about learning, assessment, and achievement and how you contribute to this as a lifelong learning professional. The programme is focused on practical teaching. You will have the opportunity to gain experience of learning and teaching alongside other professionals with support from lecturers and work-based mentors. You will be supported to develop the necessary skills to become an outstanding teacher.

- What will I study?**  
You will study:
- Research informed teaching, learning and assessment
  - Becoming a subject specialist teacher
  - Being a subject specialist teacher
  - Policy and professional issues

**How will the course be assessed?**  
A series of written and practical work is assessed by your lecturers and will determine your overall grade.

**Progression**  
On successful completion of the course, you will be eligible to gain Qualified Teacher Learning and Skills (QTLS) status, following a process of professional formation through the Society for Education and Training. In addition, those with a Certificate in Education can progress to BA (Hons) in Education and Professional Development. Those with a PGCE can progress to a MA in Education.

**Entry requirements**  
This is assessed on an individual basis. See page 34 for more details.



BA (Hons)

# Education and Professional Development

This degree course is for those working either within the education and training sector or related areas including health, careers and uniformed services looking to further their professional knowledge and skills. It will be delivered via an innovative blended learning style that combines face-to-face Saturday day schools and creative online activities with both individual and collaborative study. You will learn the skills needed to become a leading professional, who explores innovative and creative developments in teaching and learning practises.



- What will I study?**  
In year 1, you will study:
- Professional Practice (Advanced)
  - Improving Teaching and Learning
  - Critical Education

- In year 2, you will study:
- Research Methodologies
  - Major Study
  - Reflexive Studies

**How will the course be assessed?**  
A series of written and practical work is assessed by your lecturers and will determine your overall grade.

**Progression**  
On successful completion of the course, you will be able to progress to a MA in Education.

**Entry requirements**  
This is assessed on an individual basis. See page 34 for more details.







# How to apply

---

How you apply depends on the route of study you intend to take. Whether you are considering full-time or part-time study, applying is easy. Simply follow the steps below:

## Part-Time Study

To apply for a part-time course and teacher training please complete our Higher Education application form which is available at [universitycentre.nelsongroup.ac.uk](http://universitycentre.nelsongroup.ac.uk).

## Full-Time Study

Applicants for full-time undergraduate courses should apply through UCAS. The online application form and guidance notes are available on the UCAS website at: [www.ucas.com](http://www.ucas.com). If you need help with this process, contact our **Admissions Team** by email: [he@nelsongroup.ac.uk](mailto:he@nelsongroup.ac.uk) or by telephone: 01254 354047

## Higher Level Apprenticeships

To apply for a Higher Level Apprenticeship, please contact our Apprenticeship Team on 0333 003 1717 or [he@nelsongroup.ac.uk](mailto:he@nelsongroup.ac.uk)

## After you've applied

You may be invited to an informal interview with our expert lecturers who can answer any questions you may have about our programmes. It is a great chance to look around and see our facilities too.

## Talk to Us

If you have a question, get in touch, we can help.

Live Chat: [universitycentre.nelsongroup.ac.uk](http://universitycentre.nelsongroup.ac.uk)

Email: [he@nelsongroup.ac.uk](mailto:he@nelsongroup.ac.uk)

Telephone: 01254 354117 or 01254 354047



# Entry Requirements

Each course has individual entry requirements depending on the level of study you are applying for.

Further information about particular course entry requirements can be found on our website [universitycentre.nelsongroup.ac.uk](http://universitycentre.nelsongroup.ac.uk) or you can contact our Admissions Team at [he@nelsongroup.ac.uk](mailto:he@nelsongroup.ac.uk) or by telephone: **01254 354047** or **01254 354117**.

Generally, if you are applying for a HNC, Foundation Degree or BA (Hons), the entry requirement is a Level 3 qualification with GCSE Maths and English or equivalent. If you are applying for an HND, the entry requirement is a relevant HNC.

We welcome and encourage applications from mature students who may not meet

the traditional entry requirements. We will take into account your motivation, ability, industrial experience and educational background.

For further information about entry requirements, please contact the University Centre Admissions Team on [he@nelsongroup.ac.uk](mailto:he@nelsongroup.ac.uk) or **01254 354047** or **01254 354117**.

# Get help with your fees and finance

There are a number of options available to support students through their university studies.

## Tuition Fees

Our University Centre fees are lower than universities and with the additional savings of living at home, that's even more reason to study at one of our campuses.

If you are planning to study a University Centre qualification and are not self-funding the course, you are eligible to apply for tuition fee funding via Student Finance England. The Tuition Fee Loan doesn't have to be paid back until your income is over the current UK repayment threshold of £26,575\* a year.

Tuition fee loans are available for both full-time and part-time study

## Maintenance Loan

If you are studying full-time or part-time, you may be eligible for a Maintenance Loan to help with living costs. This is dependent upon your household income.

## Childcare Grant (CCG)

If you are studying full-time, you might also be able to apply for a CCG, which helps with childcare costs. This is dependent upon your household income.

Further details can be found on [www.gov.uk/studentfinance](http://www.gov.uk/studentfinance) or by contacting the HE Office on [HE@nelsongroup.ac.uk](mailto:HE@nelsongroup.ac.uk) or **01254 354047**.

## Advanced Learner Loan

If you are looking to study a course at Level 3 or above and are not eligible for this to be funded, an Advanced Learner Loan may be an option to pay your course fees.

Loan repayments are linked to what you earn when you have finished your course,

not how much you borrowed. You only need to start paying back your Advanced Learner Loan when you are earning over the repayment threshold. For more information on the Advanced Learner Loan visit [www.gov.uk/advanced-learner-loan/overview](http://www.gov.uk/advanced-learner-loan/overview) If you wish to apply for an Advanced Learner Loan, loan applications can be made when you enrol. You will need a valid UK passport or birth certificate (the application takes longer to process if you do not have a passport). You will also need information from College to complete the loan application – this will be provided at your assessment.

## Access to Higher Education Financial Support

Access to Higher Education Diploma courses may be FREE with an Advanced Learner Loan! Loans may be reclaimed upon completion of a degree. Financial support may also be available for students to support with course related fees. Please note that for the Access to University Diploma this is only reimbursed upon completion of your chosen degree course. The fully-funded programme route is for those aged 19-24 who are aiming to complete their first full Level 3 qualification.

\*correct as of March 2021





Part of the



Nelson and Colne College  
Scotland Road  
Nelson, Lancashire  
BB9 7YT



Accrington and Rossendale College  
Sandy Lane  
Accrington, Lancashire  
BB5 2AR